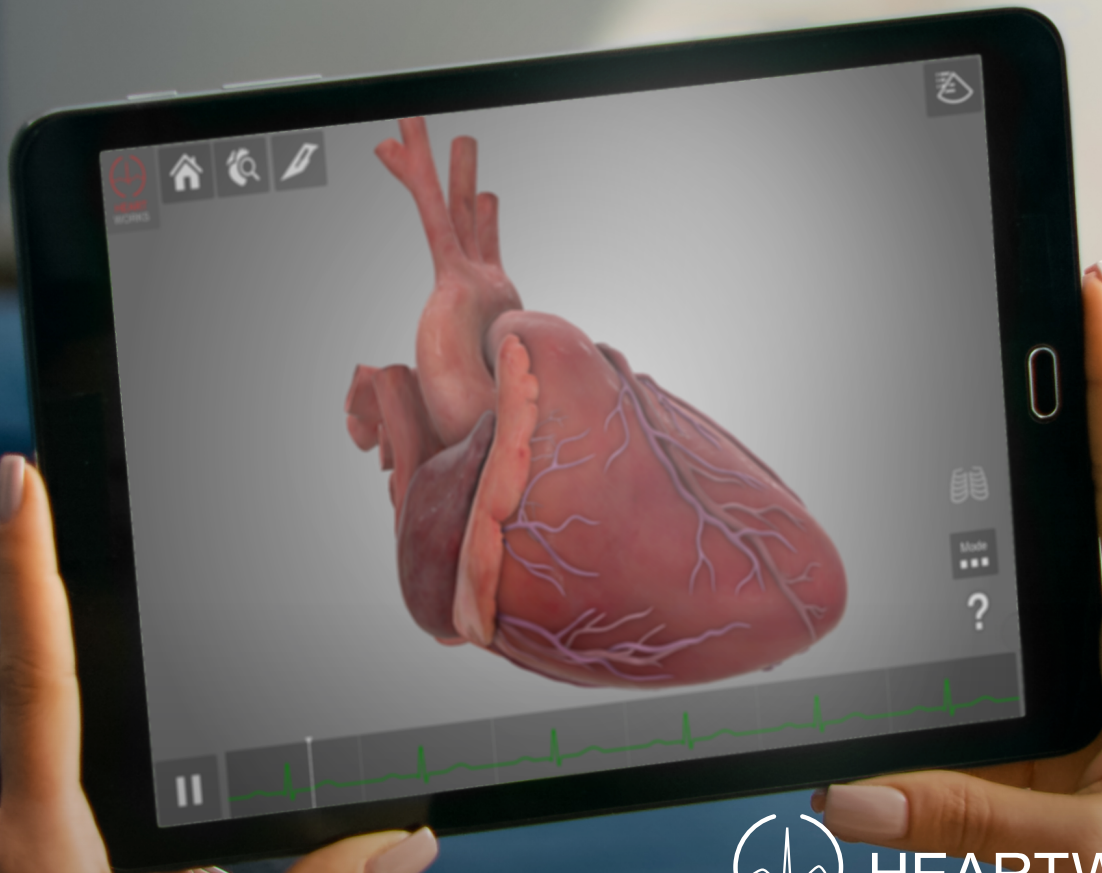




INTELLIGENT
ULTRASOUND®




for smarter scanning





HEARTWORKS® | AR

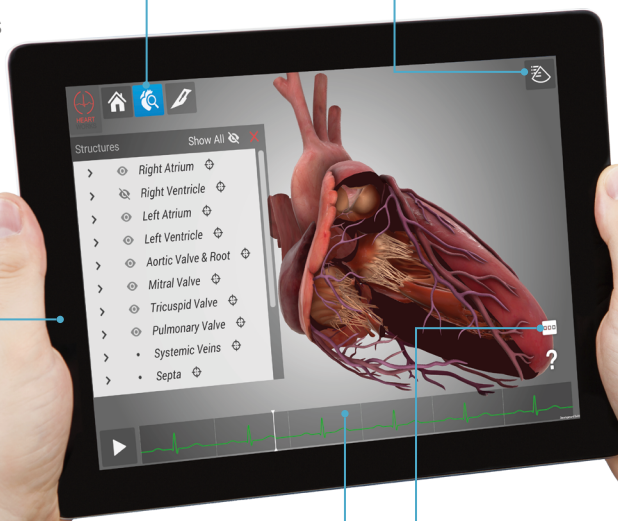
**Learn Cardiac Anatomy and
Echocardiography Anywhere**

COMPREHENSIVE AND INTERACTIVE



-  Accurate, interactive 3D heart
-  Move, zoom and slice the 3D heart in any plane
-  135 intra-cardiac structures labelled

GOLD-STANDARD IMAGING VIEWS



-  28 TEE standard imaging planes
-  20 TTE standard imaging planes
-  Transparent 3D rib cage illustrates correct TTE probe placement





VERSATILE AND PORTABLE

-  Touch-screen tablet
-  Easily connect to a projector or large screen

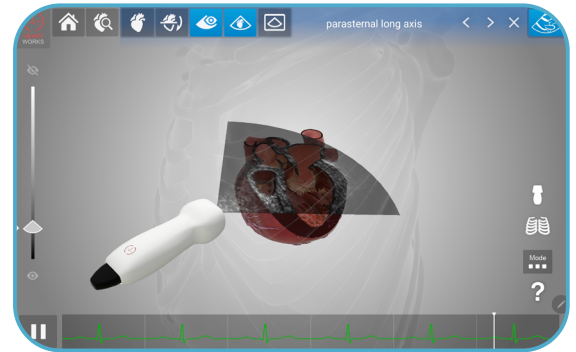
VIEWING MODES

-  Default Mode: View the heart on the standard screen background
-  Augmented Reality Mode: Position the heart within your surroundings

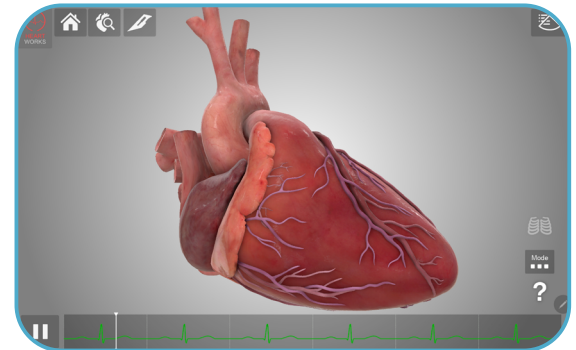
ECHOCARDIOGRAM TRACE

-  Easily pause and restart the ECG trace
-  Move to any point in the cardiac cycle for further inspection

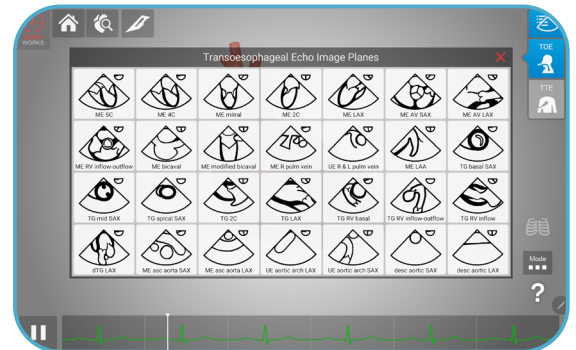
An educational tool that's versatile, easy to use and portable. Become immersed in the HeartWorks® anatomically correct, 3D heart on a portable tablet. Hold the heart in your hands, turn it around and look deep inside for an unparalleled understanding of structures and ultrasound views.



Help patients understand their condition and treatment. The portability of HeartWorks® AR provides a convenient tool to explain heart structure and function to patients and other clinicians. Clearly illustrate anatomic relationships whilst in the operating room or echocardiography laboratory.



With HeartWorks® AR learning can take place anywhere at any time. Providing versatility of learning whether self-directed exploration of cardiac anatomy, one to one tutor-led training sessions, or demonstrating anatomy and imaging principles to groups; learn, teach or share anywhere.



“The HeartWorks AR has proven to be an invaluable tool for me and my team”

Felipe Teran MD

Founder of The Resusative TEE Project. Emergency Physician and Ultrasound Specialist, University of Pennsylvania.



**READ MORE
ONLINE**



**PRODUCT
RESOURCES**



**BUY ONLINE
NOW**



Intelligent Ultrasound is unlocking ultrasound for everyone with real-time support from the classroom to the clinic. Get in touch today:

hello@intelligentultrasound.com

intelligentultrasound.com

